



The pointers on this map are a guide only. Look for the Wanstead Art Trail posters in the windows of each participating venue.



To Wanstead Park & The Temple See Corporation of London park map at entrance.



- 1 **The Tiffin Tin**
4 Station Parade, E11 1QF
Mark Derkacz
- 2 **Lillies of Wanstead**
2 Gwynne House, E11 1QH
Ann Madieson
Janet Allwood
Toni Russell
- 3 **Knock Down Ginger**
3 Gwynne House, E11 1QH
Barbara Sampson
- 4 **Dhillon & Toor**
3-5 Hermon Hill, E11 2AW
Grif Craig
Mark Derkacz
- 5 **Elizabeth Pryce**
1 High Street, E11 2AA
Caroline Barkus
Martin Andrew Barrett
- 6 **Simple 'n' Natural**
3a High Street, E11 2AA
Giles Littleford
- 7 **Revive**
3 High Street, E11 2AA
Hina Boota
Katriye Ibrahim
- 8 **Martin and Co. Letting Agents**
13a High Street, E11 2AA
Brenda Bruce
- 9 **The Complete Studio**
15 High Street, E11 2AA
Aysha Ahmad
Jerry Cuffy
Vaseem Mohammed
- 10 **Seasons/ Cooks Brasserie**
17 High Street, E11 2AA
Amelia Goldsmith-Lister
Kate Sioffanou
Laurence Lord
Rosa Rey
Sarah Millen
- 11 **Wanstead Domestic Appliances**
19 High Street, E11 2AA
Ruth Novitt
- 12 **Heads 'n' Tails Pet & Garden Supplies**
23 High Street, E11 2AA
Chris Saunders
Lou Moore
Mike Osborn
Pat Osborn
- 13 **7/Eleven Convenience Store**
29 High Street, E11 2AA
Amelia Goldsmith-Lister
- 14 **The Cuckfield public house**
31 High Street, E11 2AA
Kate Brown
Sharon Lindsey
- 15 **The Delicatase**
33 High Street, E11 2AA
Hugh Gilson
Tim Payne
- 16 **Blush Temples**
37 High Street, E11 2AA
Cheryl Braniff
Terry Baynes
- 17 **The Larder**
39 High Street, E11 2AA
Georgina Beresford
Grif Craig
Katriye Ibrahim
Shirley Cullum
- 18 **Wanstead Beauty Clinic**
47 High Street, E11 2AA
Mark Derkacz
- 19 **Under the Arch**
22-26 Nightingale Lane, E11
Jamie Fraser
Margaret Davies
Sharon Lindsey
- 20 **Eightyfour-Geoffrey Wilkinson Photography**
84 Nightingale Lane, E11
Dennis Wilde
Geoffrey Wilkinson
Victoria Moiseiwitsch
- 21 **Wanstead Youth Centre**
Elmcroft Avenue, E11 2DB
Mon-Fri 9am-10pm and Sat 10am-4pm, Sun 19th Sept: 11am-3pm
- 22 **Nightingale public house**
51 Nightingale Lane, E11 2EY
Caspar Williams
Chris Saunders
Claire Brett
Dani Iwachow
Dennis Wilde
Shirley Cullum
Tara Williams "Miss T"
Wanstead Youth Centre
- 23 **Old Cottage Antiques**
8 High Street, E11
Eamon Overall
- 24 **Vintage**
10 High Street, E11
Frances Cowper Holzhausen
- 25 **Bennetts of London**
69 High Street, E11 2AE
Caspar Williams
- 26 **J. Jolliffe Ltd**
73 High Street, E11 2AE
Barbara Sampson
- 27 **Wanstead Pharmacy**
75 High Street, E11 2BA
Billie Figg
Jack Figg
- 28 **A.G. Dennis Ltd butchers**
3 Clockhouse Parade, E11 2AG
Jill Stock
Jonathan Fentiman
Sally Sayers
- 29 **Christ Church**
Wanstead Place, E11 2SW
Sat 18th Sept: 10am-5pm, Sun 19th Sept: 11am-5pm, Sat 25th Sept: 10am-12pm
Brenda Bruce
Sally Sayers
Art and design work from Wanstead High School students plus a flower festival on the 18th and 19th Sept.
- 30 **Wanstead Library**
Spratt Hall Road, E11
Work by local primary school children and Wanstead Youth Centre as well as:
Gabrielle Collard
Jenny Smerdon
Katriye Ibrahim
Lucy Williams
Nathalie Panayi
Robert Mason (Silent Auction)
Tugba Kop
- 31 **J.D. Harvey greengrocer**
6 Clockhouse Parade, E11
Jill Stock
Ruth Novitt
Marian Temple
- 32 **T-Space Architects**
The Corner House, 1st floor
2 Grove Park, E11 2DL
Wanstead Art Trail banner
- 32 **Age Concern Redbridge**
The Corner House, ground floor
2 Grove Park, E11 2DL
Mon-Fri 10 am-3pm, Sun 19th Sept: 10 am-4 pm, Saturday 25th Coffee Morning organised by The Wanstead Society 10am-12 noon.
- 33 **Wanstead News**
117a High Street, E11 2RL
Toni Russell
- 34 **Petty Son and Prestwich**
11 Woodbine Place, E11 2RH
Azusa Reddy
Dani Iwachow
Laurence Lord
- 35 **Bambini**
15 Woodbine Place, E11 2RH
Hilda Gardner
- 36 **Cherry Tree Café**
25 Woodbine place, E11
Open Mon-Fri: 9.30 am-4pm and Sun 19th Sept: 10am-5pm
London Borough of Redbridge adults with learning difficulties - Art in the Garden, Snaresbrook Arts Project.
- 37 **The Art Shop**
117c High Street, E11 2RL
Stephie Butler
- 38 **Sante Fe**
119 High Street, E11 2RL
Tony Port
- 39 **Nice Croissant**
119a High Street, E11 2RL
Peter Davies
- 40 **The Orange Tree**
123 High Street, E11 2RL
Lisa Atkin
- 41 **Keating Jewellers**
123a High Street, E11 2RL
Donna Mizzi
Verity Keating
- 42 **Francis & C Walters**
121 High Street, E11 2RL
Sally Sayers
- 43 **Flora**
121a High Street, E11 2RL
Kate Sioffanou
- 44 **Coco**
125 High Street, E11 2RL
Eva Jaber
- 45 **Packfords opticians**
127 High Street, E11 2RL
Milda Stockiene
Wendy Green
- 46 **Olive Branch**
141 High Street, E11 2RL
Geoffrey Wilkinson
Hasina Zaman
- 47 **Zoology Men**
143 High Street, E11 2RL
Jonathan Fentiman
J.M.W. Turner
- 48 **Zoology**
145 High Street, E11 2RL
Sarie Miell
Stuart Reid
- 49 **Douglas Allen**
52 High Street, E11 2RJ
Mike Edwards
- 50 **Rio Shoes**
54 High Street, E11 2RJ
Ingrid Johannesson
- 51 **Biyoni hairdresser**
56 High Street, E11 2RJ
Charlotte Stubbs
Hamillia Patel
- 52 **Majestic Wine Warehouse**
60 High Street, E11 2RJ
Work by students who attend Mick Martin's art classes
Bal Kara
Brian O'Leary
David Waterhouse
James Valentine
Jenny Waterhouse
Joanne Perry
Mick Martin
Pat Pratley
Paula Vaughan
Peter Nursey
Vincent Maffei
- 53 **Spicer McColl**
64 High Street, E11 2RJ
Fred Downes-Grainger
Graham Bush
- 54 **Bairstow Eves Countrywide**
68 High Street, E11 2RJ
Essex Art Club members
Barbara Langer
Hilary Garnock-Jones
Irene Thomas
Sandra Willison
- 55 **Barnardo's**
70 High Street, E11 2RJ
Open Studio Sun Sept 19th & 26th see Barnardo's window for details. Half of all proceeds go to Barnardo's.
Neil Clayden
- 56 **The George public house**
159 High Street, E11 2RL
Avril Rodriguez-Dizon
Barbara Howden
Barbara Langer
Brenda Coyle
Carole Edrich
Clive Power
Elizabeth Mansi
Ginnette Carly
Hilary Garnock-Jones
Irene Thomas and...
- 57 **Bike Trax Wanstead**
3 Cambridge Park, E11 2PU
Carole Edrich
- 58 **Belgique**
29 Cambridge Park, E11 2PU
Krystof Stoklasek
- 59 **Wiseman Lee solicitors**
9-13 Cambridge Park, E11 2PU
Essex Art Club members
Erica Johns
Helga Lee
- 60 **The Tapas Bar**
7 Cambridge Park, E11 2LW
Donna Mizzi
- 61 **Wanstead House**
21 The Green, E11 2NT
Sun 19th Sept: 11am-5pm
Mon-Fri 9am-10pm
Sat 25th Sept: 9am-6pm.
Work by students who attend classes and clubs at Wanstead House.
- 62 **Wanstead Golf Club**
Overton Drive, E11 2LW
7am-8pm daily
Andrew Gray
Barbara Sampson
Billie Figg
Brian O'Leary
Caroline Barkus
Eamon Overall
Frances Cowper Holzhausen
Graham Bush
Geoff Haines
Hasina Zaman
Jack Figg
J.M.W. Turner
Kathy Taylor
Lou Moore
Martin Andrew Barrett
Mark Derkacz and...
- 63 **The Temple**
Wanstead Park, E11 2LT
Sat 18th-Sun 19th & Sat 25th-Sun 26th Sept: 12pm-5pm
Barbara Sampson
Brenda Braithwaite
Elizabeth Mansi
Erica Johns
Francesca Jaggs
Georgina Beresford
Irene Thomas
Juliet Smith
J.M.W. Turner
Nigel Mantell
Patricia Wright
Sarah Tully
Toni Russell
Nigel Mantell will be demonstrating stonecarving at The Temple on Sun 26th Sept. from 2.30-4.30pm. Toilets and refreshments. NB. No Parking available in Wanstead Park.

Art Trail Team

- Katriye Ibrahim**
Art Trail organiser & Wanstead Society treasurer
- Barbara Sampson**
Artist & Art Trail Schools Co-ordinator
- Iris Vandenberghe**
Avril Rodriguez-Dizon
Sally Sayers
Wanstead Society
- Donna Mizzi**
Art Trail Press & Communications
- John Goodman**
Art Trail walks & Wanstead Society

J. M. W. Turner and Wanstead

As a very young man, apprenticed to Thomas Hardwick, architect of St Mary's Church, Turner made a modest pencil sketch of the grand new church in Wanstead, St Mary the Virgin on Overton Drive.

The artist was born in 1775 into a humble background, as the son of a barber. Recognising his son's great talent, Turner senior displayed his boy's paintings in the family barber shop in Covent Garden. We have been fortunate enough to have obtained three copies of this sketch of the church on licence from the Tate Gallery for the duration of the Art Trail. One print will be displayed in our own barber's shop Zoology Men as well as at the Wanstead Golf Club and the Temple in Wanstead Park.

Following the Turner example of displaying work in shops, a large body of work by Wanstead artists and residents will be displayed in our High Street shop windows and other community venues throughout the Trail.

'Let's Get Together' walks

Let us show you the Trail. Walking in the footsteps of a very famous artist, we will explore places of interest.

Dates: Sunday 19th September 2pm.
Saturday 25th September 2pm.
Sunday 26th September 2pm.

Meeting point: Outside The Corner House,
2 Grove Park, Wanstead High Street

Leader: John Goodman
Duration of walk: Approximately 2 hrs

The walk will finish at the Temple in Wanstead Park. On the way we will find the Church of St Mary the Virgin. J.M.W. Turner sketched this church in 1789-90.

Silent auction

To raise funds for future projects with the Wanstead Society, Robert Mason, an internationally recognised artist, has donated a small figurative painting to be auctioned. Robert Mason has exhibited widely in this country and abroad. His work is in many public and corporate collections, including the British Museum, V&A and the Metropolitan Museum of Art New York. His expressive drawings, paintings and works on paper combine traditional materials with more experimental techniques to create a sense of depth and movement and emotional connection with the viewer. See it in Wanstead Library throughout September. To bid for the painting, email art@wansteadsociety.org.uk (minimum £150).

Schools

Local schools have produced a wonderful selection of work around the theme of school and neighbourhood. This can be seen in the library throughout September.

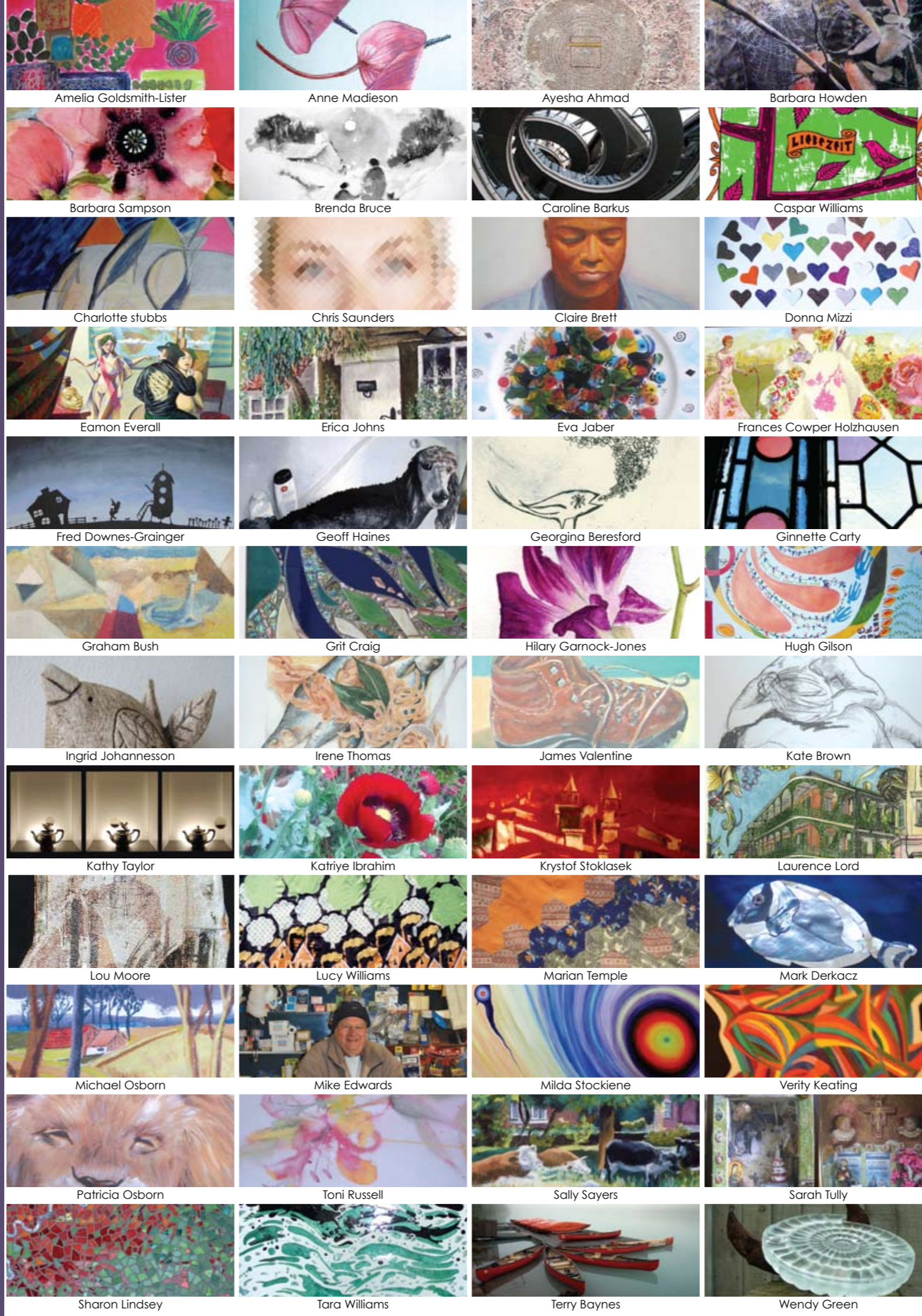
Sponsors

Wanstead Society: www.wansteadsociety.org.uk
London Borough of Redbridge Area 1
Adult Education: www.redbridge-iae.ac.uk

Recycle

When you have finished with your map, please pass it on to someone else. Thank you.

Every care has been taken to ensure that the information given in this publication is accurate at the time of going to print. The Wanstead Art Trail and its organisers cannot be held responsible for any variations, errors or omissions. We advise visitors to confirm details for individual venues before setting out. No recommendation is implied in any of the listings. Under no circumstances can the Wanstead Art Trail organisers accept responsibility for any loss, damage or injury, sustained by any member of the public visiting or displaying work.



Welcome to the first Wanstead Art Trail, which we hope will be the first of many.

This Art Trail has attracted more than 130 artists and enthusiastic amateurs who will be showcasing their work in over 60 venues throughout the Wanstead area.

Over the eight days of the trail, visitors will have the opportunity to enjoy a lively and creative experience all within walking distance.

On view will be a variety of art, including painting, sculpture, photography, textiles, mosaic and stained glass. Meet the artists and have the chance to purchase unique pieces from them.

We would like to thank the Wanstead Society, particularly our former chairperson Anne Barlow for her encouragement and inspiration, our other sponsors and the Art Trail team who, with their specialist skills, have made this event happen.

We hope that you will have a fantastic time on the trail and discover hidden gems.

Katriye Ibrahim
Wanstead Art Trail organiser.

Sponsored by



The Wanstead Society